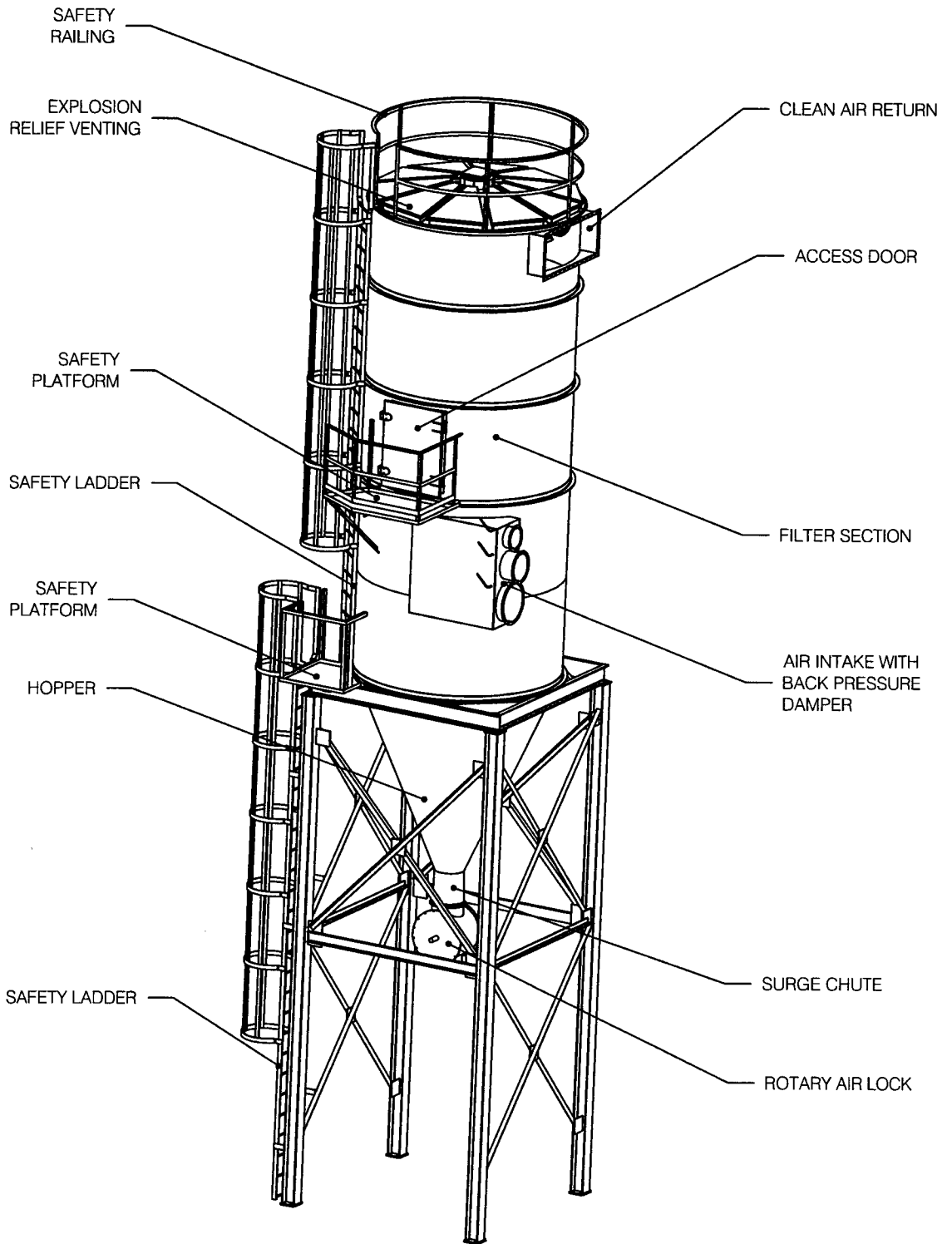


THIS DOCUMENT CONTAINS PROPRIETARY AND CONFIDENTIAL DATA OF AIR CONTROL TECHNOLOGY NO DISCLOSURE REPRODUCTION OR USE OF ANY PART THEREOF, MAY BE MADE WITHOUT WRITTEN PERMISSION OF THE COMPANY.

# DUST COLLECTOR RSB



SPECIFICATIONS AND INFORMATION CONTAINED IN THIS CATALOG ARE SUBJECT TO CHANGE WITHOUT NOTICE.



3636 Hawkestone Road  
Mississauga, Ontario L5C 2V2  
email:sales@aircontroltech.com  
www.aircontroltech.com

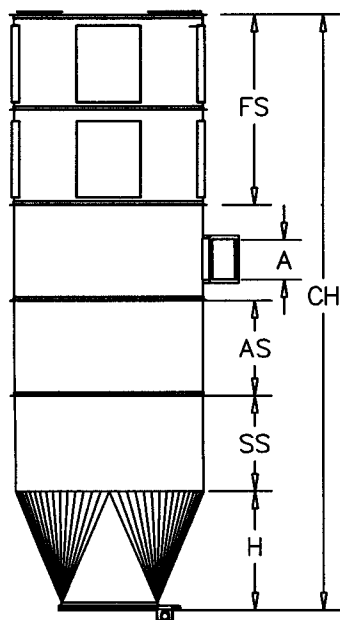
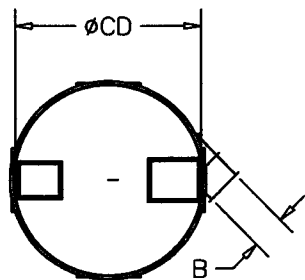
Toll Free: (800) 555-1302  
Fax: (905) 949-0886

REL. AUG. 2002 RSB10\_CAT\_2002

# ROUND SHAKER BAG TYPE DUST COLLECTORS BY



3636 Hawkestone Road Toll Free: (800) 555-1302 <http://www.aircontroltech.com>  
 Mississauga, ON L5C 2V2 Fax: (905) 949-0886 E-Mail: [sales@aircontroltech.com](mailto:sales@aircontroltech.com)



## COLLECTORS OVERALL DIMENSIONS

MODEL	CD [Ft.]	CH [Ft.]	FS [Ft.]	SS [Ft.]	H [Ft.]	AS [Ft.]	INLET (AxB) [In.]
RSB-7.5/117-07	7.5	23'-10"	8	10	3'-10"	5	24x20
RSB-7.5/117-08	7.5	28'-10"	9	10	3'-10"	5	24x20
RSB-7.5/117-10	7.5	28'-10"	11	10	3'-10"	5	24x20
RSB-7.5/072-08	7.5	28'-10"	9	10	3'-10"	5	24x20
RSB-7.5/072-10	7.5	28'-10"	11	10	3'-10"	5	24x20
RSB-7.5/057-08	7.5	28'-10"	9	10	3'-10"	5	24x20
RSB-7.5/057-10	7.5	28'-10"	11	10	3'-10"	5	24x20
RSB-10/102-08	10	31'-7"	9	10	6'-7"	5	32x25
RSB-10/102-10	10	31'-7"	11	10	6'-7"	5	32x25
RSB-10/102-12	10	36'-7"	13	10	6'-7"	5	32x25
RSB-10/102-14	10	36'-7"	15	10	6'-7"	5	32x25

MODEL	STANDARD STORAGE CAPACITY [Ft <sup>3</sup> ]	ADDITIONAL SECTION [Ft <sup>3</sup> ]	HOPPER OUTLET [Ft.]
RSB-7.5	555	221	4x4
RSB-10	1081	393	4x6

## FLOW RATE CAPACITIES

MODEL	BAG QTY	BAG DIAM. [In.]	BAG LENGTH [Ft.]	FILTER AREA [Ft <sup>2</sup> ]	CFM @ AIR TO CLOTH RATIO					
					5:1	6:1	7:1	8:1	9:1	10:1
RSB-7.5/117-07	117	6.375	7	1366	6831	8197	9563	10930	12296	13662
RSB-7.5/117-08	117	6.375	8	1561	7807	9368	10930	12491	-	-
RSB-7.5/117-10	117	6.375	10	1952	9759	11710	13662	-	-	-
RSB-7.5/072-08	72	8	8	1206	6029	7235	8440	9646	10852	12058
RSB-7.5/072-10	72	8	10	1507	7536	9043	10550	12058	-	-
RSB-7.5/057-08	57	9	8	1074	5369	6443	7517	8591	9665	10739
RSB-7.5/057-10	57	9	10	1342	6712	8054	9396	10739	12081	13424
RSB-10/102-08	102	9	8	1922	9608	11530	13452	15375	17295	19217
RSB-10/102-10	102	9	10	2402	12011	14413	16815	19217	21619	24021
RSB-10/102-12	102	9	12	2884	14419	17302	20186	23070	-	-
RSB-10/102-14	102	9	14	3364	16822	20186	23551	-	-	-

SPECIFICATIONS AND INFORMATION CONTAINED IN THIS CATALOG ARE SUBJECT TO CHANGE WITHOUT NOTICE.

THIS DOCUMENT CONTAINS PROPRIETARY AND CONFIDENTIAL DATA OF AIR CONTROL TECHNOLOGY NO DISCLOSURE REPRODUCTION OR USE OF ANY PART THEREOF, MAY BE MADE WITHOUT WRITTEN PERMISSION OF THE COMPANY.